



# New York State Crime Report

Andrew M. Cuomo  
Governor

Michael C. Green  
Executive Deputy Commissioner

September 2019

## Crime in New York State 2018 Final Data

New York State and the FBI use seven Index crime categories as indicators of overall crime trends: murder, rape, robbery and aggravated assault, which are classified as violent crimes; and the property crimes of burglary, larceny and motor vehicle theft. The FBI created these categories to allow for uniform crime reporting across all 50 states. This report details 2018 Index crime in New York State, its 62 counties and two regions: New York City and the 57 counties outside of the five boroughs (Rest of State).

Police departments and sheriffs' offices report Index crime to the Division of Criminal Justice Services (DCJS) through the Uniform Crime Reporting and Incident-Based Reporting programs. This report also details Index crime rates per 100,000 population statewide and by county and region. DCJS uses county population data from the FBI, which is based on U.S. Census estimates, to calculate those crime rates.

New York State implemented the FBI's expanded definition of rape in 2015; this resulted in an uptick in violent crime and reported rapes in that year when compared to prior years. As a result, caution should be used when citing or interpreting any percentage changes between rapes reported in 2015 and any subsequent year, to those reported in 2014 and earlier.

The FBI [made the change](#) to more accurately reflect the scope and volume of sexual assaults nationwide. Before the implementation, those offenses would have been classified by the FBI and state as Part II sex offenses.

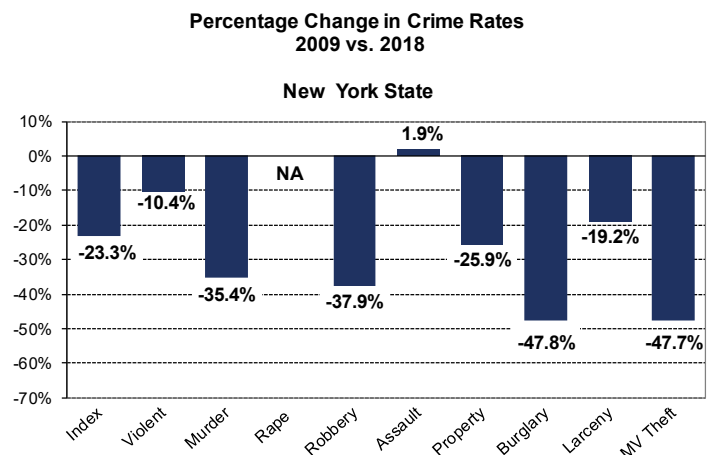
This report compares Index and violent crime over the 10-year period from 2009 through 2018, but it *does not* include percentage change comparisons between rape statistics reported in 2009 vs. 2018 because of the expanded definition.

Index crimes reported by police departments and sheriffs' offices to DCJS annually from 2014 to 2018 are online: [www.criminaljustice.ny.gov](http://www.criminaljustice.ny.gov) (click the link to Statistics).

Reported Index crime in New York State declined for the sixth consecutive year in 2018, with 348,598 Index crimes reported. This is the fewest number of crimes reported since statewide reporting began in 1975. Robbery and burglary decreased significantly last year.

The historic low in reported Index crime has resulted in New York's Index crime rate declining by 23 percent between 2009 and 2018.

During that 10-year period, the violent crime rate decreased 10 percent and the property crime rate declined 26 percent. Appendix 1 has additional details.

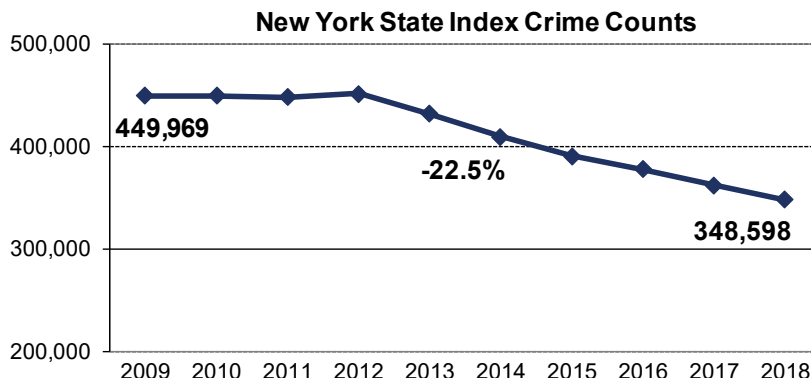


## Change in Crime Volume: 2009 vs. 2018

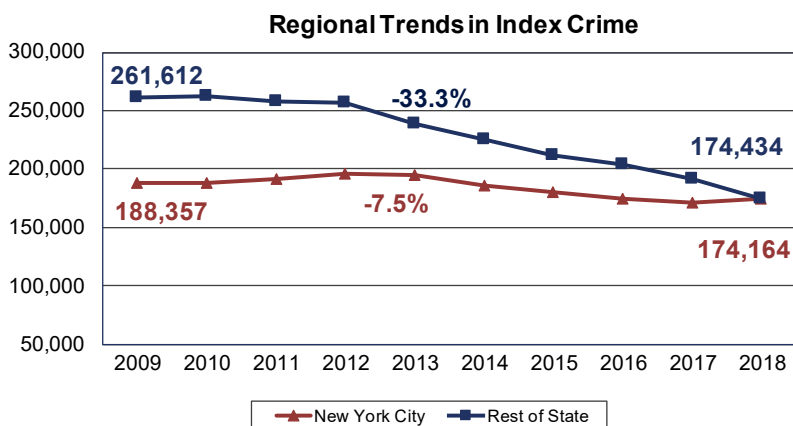
Between 2009 and 2018 Index crime declined, with 101,371 fewer crimes reported.

This represents a 22.5 percent reduction in the volume of reported crime over that 10-year period.

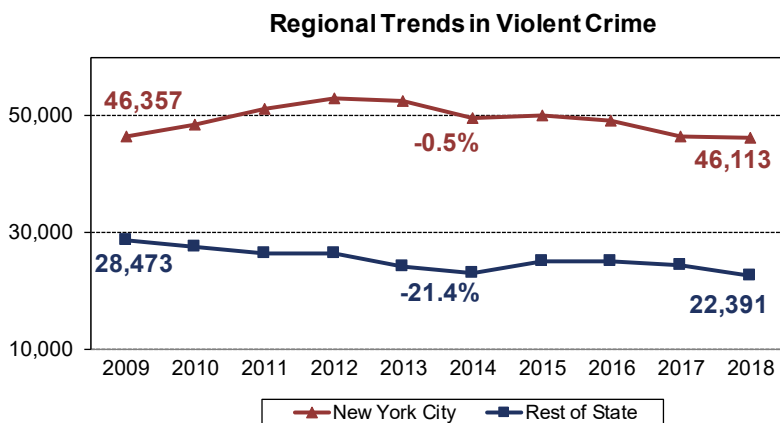
Reported Index crime has declined annually since 2012.



## Regional Trends in Crime: 2009 to 2018



Index crimes in the state’s two regions — New York City (five counties, also referred to as boroughs) and Rest of State (57 counties) — declined when comparing 2009 to 2018. The decline in the Rest of State significantly outpaced the decrease in New York City: Between 2009 and 2018, reported Index crime declined 7.5 percent in New York City and 33.3 percent in the Rest of State. Index crime has decreased annually in Rest of State since 2010. New York City reported a slight increase for the first time in six years, up 2 percent when comparing 2018 to 2017.



The decrease in violent crime in the 57 counties also was significantly greater than in New York City: 21.4 percent vs. 0.5 percent. New York City has seen a large decrease in homicides during this time period, reporting a decline of 37.4 percent.

As noted, New York State’s implementation of the FBI’s expanded definition of rape resulted in an uptick in violent crime in both regions from 2014 to 2015. This change resulted in 3,691 additional crimes being classified as rape; prior to the change, those offenses would have been classified by the FBI and state as Part II sex offenses.

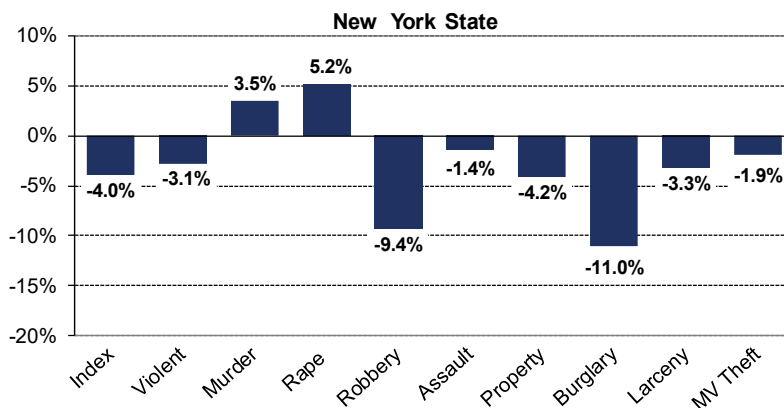
## Statewide Crime Trends: 2017 vs. 2018

The number of Index crimes reported in New York State decreased 4 percent in 2018 as compared to the previous year.

Five of the seven Index crimes declined, with significant reductions occurring in burglary (-11%) and robbery (-9.4%).

Violent crime decreased by 3.1 percent, with decreases reported in robbery and aggravated assault. Reported rape increased (+5.2%). While murder increased from 2017 (+3.5%), the total reported in 2018 (569) was the second lowest number since reporting began in 1975. The previous all-time low occurred in 2017 (550). Property crime decreased by 4.2 percent; all three property crime categories declined.

Percentage Change in Crime Volume  
2017 vs. 2018



## Regional Crime Trends: 2017 vs. 2018

### New York City

Index crimes increased slightly (+1.7%) in 2018, attributable to the increase in rape (+18.5%) and larceny (+3.4%).

A significant reduction in robberies (-7.4%) contributed to the overall decrease in violent crime. New York City reported 295 murders in 2018, the second lowest ever recorded. The fewest murders occurred in 2017: 292.

Motor vehicle theft (-3.5%) and burglary (-2.4%) decreased, while aggravated assaults (+0.9%) increased slightly.

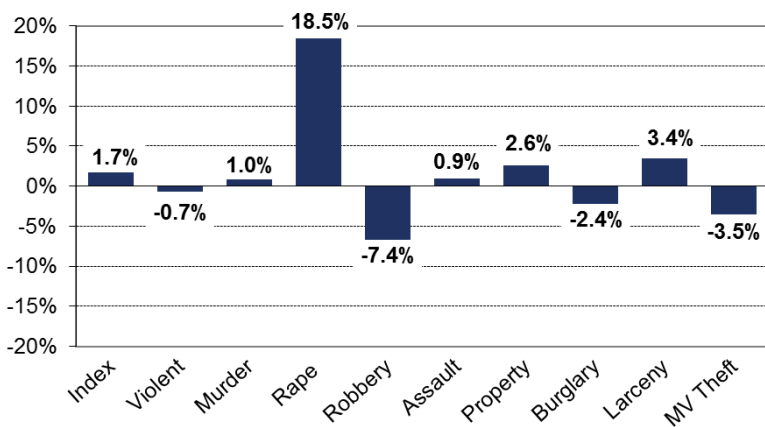
### Rest of State

The Rest of State saw a decline in reported crime: down 9 percent when compared to 2017. The decrease was driven by reductions in six of the seven Index crimes. Notably, burglaries decreased 15.1 percent and robberies decreased 14.1 percent.

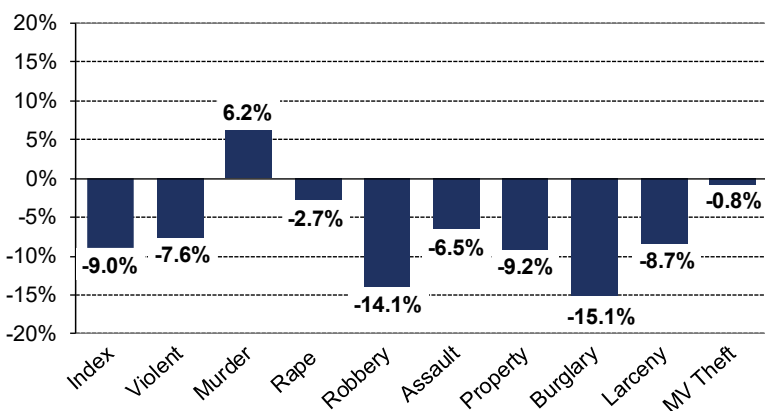
There also were decreases in larceny (-8.7%), aggravated assault (-6.5%), reported rape (-2.7%) and motor vehicle theft (-0.8%). Only the number of murders increased (+6.2%).

Appendix 3 lists crime rates by county for 2018 and Appendix 6 details crime counts by county for 2017 vs. 2018.

### New York City



### Rest of State

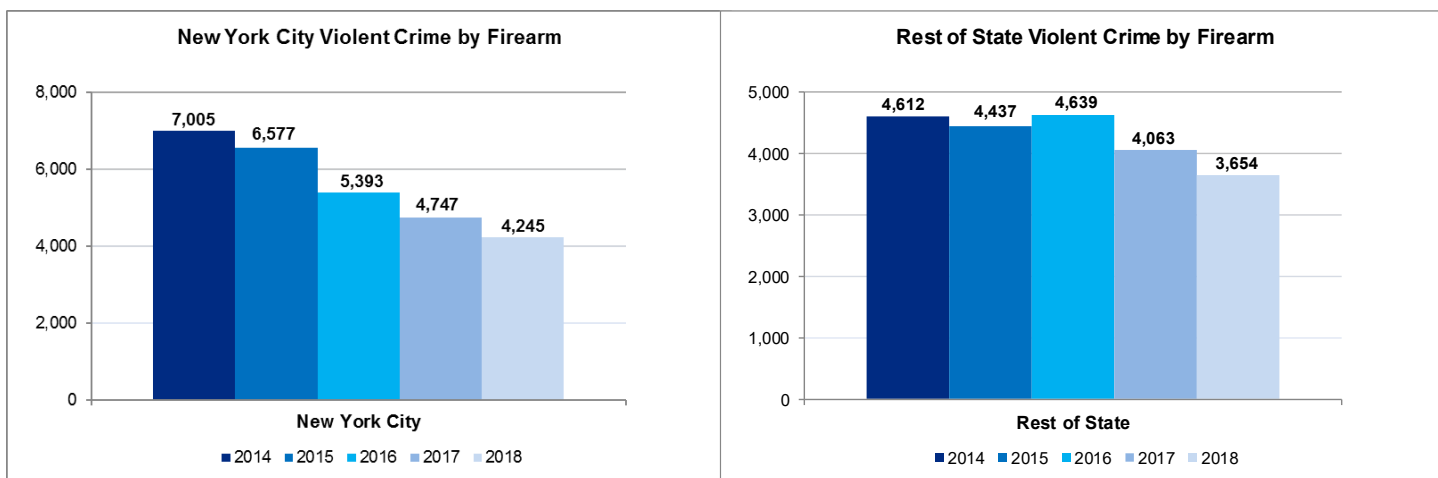


## Trends in Violent Crime by Firearm: 2014 vs. 2018

Police departments and sheriffs' offices in New York State report to DCJS the number of violent crimes that involved the use of a firearm.

In New York City, violent crime involving firearms has decreased dramatically during the past five years: 39 percent when comparing 2014 to 2018, and 11 percent between 2017 and 2018.

Violent crimes involving a firearm in the 57 counties outside of New York City decreased by 21 percent when comparing 2014 to 2018, and 10 percent from 2017 to 2018. See Appendix 4 for more details.



## Regional Trends in Homicide: 2017 vs. 2018

There were 569 reported homicides in 2018 in New York State, the second fewest since statewide reporting began in 1975. There were 19 more homicides reported in 2018 than 2017, which had the lowest number of homicides on record. Homicides in New York City increased 1 percent (295 vs. 292) and homicides in Rest of State increased 6.2 percent (274 vs. 258). Appendices 1 and 2 include more details.

Since 2009, homicides statewide have decreased 27.4 percent. Homicides involving a firearm experienced a similar trend, declining 31.7 percent when comparing 2009 to 2018.

The number of non-firearm related homicides (239) also decreased (-20.6%) when comparing 2009 to 2018.

New York State Homicides 2009 - 2018												% Change	
	2009	2010	2011	2012	2013	2014	2015	2016	2017	2018	2017-18	2009-18	
<b>New York State</b>													
<b>Total Homicide</b>	<b>784</b>	<b>866</b>	<b>770</b>	<b>688</b>	<b>645</b>	<b>616</b>	<b>620</b>	<b>631</b>	<b>550</b>	<b>569</b>	<b>3.5%</b>	<b>-27.4%</b>	
Non-Firearm Related	301	344	322	277	279	267	234	262	255	239	-6.3%	-20.6%	
Firearm Related	483	522	448	411	366	349	386	369	295	330	11.9%	-31.7%	
<b>New York City</b>													
<b>Total Homicide</b>	<b>471</b>	<b>536</b>	<b>515</b>	<b>419</b>	<b>335</b>	<b>333</b>	<b>352</b>	<b>335</b>	<b>292</b>	<b>295</b>	<b>1.0%</b>	<b>-37.4%</b>	
Non-Firearm Related	169	213	200	178	141	145	117	132	139	134	-3.6%	-20.7%	
Firearm Related	302	323	315	241	194	188	235	203	153	161	5.2%	-46.7%	
<b>Rest of State</b>													
<b>Total Homicide</b>	<b>313</b>	<b>330</b>	<b>255</b>	<b>269</b>	<b>310</b>	<b>283</b>	<b>268</b>	<b>296</b>	<b>258</b>	<b>274</b>	<b>6.2%</b>	<b>-12.5%</b>	
Non-Firearm Related	132	131	122	99	138	122	117	130	116	105	-9.5%	-20.5%	
Firearm Related	181	199	133	170	172	161	151	166	142	169	19.0%	-6.6%	

Source: DCJS, Uniform Crime Reporting File. Includes all reports received as of 9/3/2019.

### **Appendices 1 through 6**

Data Source: DCJS, Uniform Crime Reporting File; includes all reports received by the agency as of September 3, 2019.

The increase in violent crime and rape between 2014 and 2015 is attributable to New York State's implementation of the FBI's [expanded definition](#) of rape.

## Appendix 1

### New York State Index Crime Counts and Rates per 100,000 Population: 2009-2018

Counts	2009	2010	2011	2012	2013	2014	2015	2016	2017	2018	% change	
											2017-18	2009-18
<b>Index Crime</b>	<b>449,969</b>	<b>450,431</b>	<b>448,909</b>	<b>452,366</b>	<b>432,698</b>	<b>410,178</b>	<b>391,439</b>	<b>377,917</b>	<b>362,952</b>	<b>348,598</b>	<b>-4.0%</b>	<b>-22.5%</b>
<b>Violent Crime</b>	<b>74,830</b>	<b>75,836</b>	<b>77,464</b>	<b>79,304</b>	<b>76,481</b>	<b>72,367</b>	<b>75,158</b>	<b>74,124</b>	<b>70,676</b>	<b>68,504</b>	<b>-3.1%</b>	<b>-8.5%</b>
Murder	784	866	770	688	645	616	620	631	550	569	3.5%	-27.4%
Rape	2,565	2,766	2,773	2,831	2,616	2,539	6,151	6,245	6,379	6,708	5.2%	N/A
Robbery	28,063	28,405	28,351	28,555	27,179	23,994	23,888	22,285	20,063	18,176	-9.4%	-35.2%
Agg. Assault	43,418	43,799	45,570	47,230	46,041	45,218	44,499	44,963	43,684	43,051	-1.4%	-0.8%
<b>Property Crime</b>	<b>375,139</b>	<b>374,595</b>	<b>371,445</b>	<b>373,062</b>	<b>356,217</b>	<b>337,811</b>	<b>316,281</b>	<b>303,793</b>	<b>292,276</b>	<b>280,094</b>	<b>-4.2%</b>	<b>-25.3%</b>
Burglary	62,677	64,695	65,089	64,081	56,177	50,665	44,068	39,733	34,842	30,999	-11.0%	-50.5%
Larceny	290,679	289,491	287,700	291,779	284,530	271,414	256,872	249,726	244,074	235,995	-3.3%	-18.8%
MV Theft	21,783	20,409	18,656	17,202	15,510	15,732	15,341	14,334	13,360	13,100	-1.9%	-39.9%
Rates per 100,000 Pop.	2009	2010	2011	2012	2013	2014	2015	2016	2017	2018	% change	
											2017-18	2009-18
<b>Index Crime</b>	<b>2,303.1</b>	<b>2,324.9</b>	<b>2,306.8</b>	<b>2,312.0</b>	<b>2,202.4</b>	<b>2,077.7</b>	<b>1,977.8</b>	<b>1,914.4</b>	<b>1,828.9</b>	<b>1,784.2</b>	<b>-2.4%</b>	<b>-22.5%</b>
<b>Violent Crime</b>	<b>383.0</b>	<b>391.4</b>	<b>398.1</b>	<b>405.3</b>	<b>389.3</b>	<b>366.6</b>	<b>379.8</b>	<b>375.5</b>	<b>356.1</b>	<b>350.6</b>	<b>-1.5%</b>	<b>-8.5%</b>
Murder	4.0	4.5	4.0	3.5	3.3	3.1	3.1	3.2	2.8	2.9	5.1%	-27.4%
Rape	13.1	14.3	14.2	14.5	13.3	12.9	31.1	31.6	32.1	34.3	6.8%	N/A
Robbery	143.6	146.6	145.7	145.9	138.3	121.5	120.7	112.9	101.1	93.0	-8.0%	-35.2%
Agg. Assault	222.2	226.1	234.2	241.4	234.3	229.0	224.8	227.8	220.1	220.3	0.1%	-0.8%
<b>Property Crime</b>	<b>1,920.1</b>	<b>1,933.5</b>	<b>1,908.7</b>	<b>1,906.7</b>	<b>1,813.1</b>	<b>1,711.1</b>	<b>1,598.1</b>	<b>1,538.9</b>	<b>1,472.8</b>	<b>1,433.6</b>	<b>-2.7%</b>	<b>-25.3%</b>
Burglary	320.8	333.9	334.5	327.5	285.9	256.6	222.7	201.3	175.6	158.7	-9.6%	-50.5%
Larceny	1,487.8	1,494.2	1,478.4	1,491.3	1,448.2	1,374.8	1,297.9	1,265.0	1,229.9	1,207.9	-1.8%	-18.8%
MV Theft	111.5	105.3	95.9	87.9	78.9	79.7	77.5	72.6	67.3	67.0	-0.4%	-39.9%

## Appendix 2

### New York State Index Crime Summary by Region: 2009-2018

New York City	2009	2010	2011	2012	2013	2014	2015	2016	2017	2018	% change	
											2017-18	2009-18
<b>Index Crime</b>	<b>188,357</b>	<b>188,104</b>	<b>191,666</b>	<b>195,753</b>	<b>194,355</b>	<b>185,191</b>	<b>179,948</b>	<b>174,402</b>	<b>171,248</b>	<b>174,164</b>	<b>1.7%</b>	<b>-7.5%</b>
<b>Violent Crime</b>	<b>46,357</b>	<b>48,489</b>	<b>51,209</b>	<b>52,993</b>	<b>52,384</b>	<b>49,444</b>	<b>50,088</b>	<b>49,124</b>	<b>46,433</b>	<b>46,113</b>	<b>-0.7%</b>	<b>-0.5%</b>
Murder	471	536	515	419	335	333	352	335	292	295	1.0%	-37.4%
Rape	832	1,036	1,092	1,162	1,112	1,070	2,244	2,372	2,375	2,814	18.5%	N/A
Robbery	18,597	19,608	19,773	20,201	19,170	16,581	16,946	15,544	13,995	12,962	-7.4%	-30.3%
Agg. Assault	26,457	27,309	29,829	31,211	31,767	31,460	30,546	30,873	29,771	30,042	0.9%	13.6%
<b>Property Crime</b>	<b>142,000</b>	<b>139,615</b>	<b>140,457</b>	<b>142,760</b>	<b>141,971</b>	<b>135,747</b>	<b>129,860</b>	<b>125,278</b>	<b>124,815</b>	<b>128,051</b>	<b>2.6%</b>	<b>-9.8%</b>
Burglary	18,780	17,926	18,159	18,635	16,606	15,916	14,098	12,041	11,104	10,837	-2.4%	-42.3%
Larceny	112,526	111,370	112,864	115,935	117,931	112,107	108,376	106,868	107,976	111,680	3.4%	-0.8%
MV Theft	10,694	10,319	9,434	8,190	7,434	7,724	7,386	6,369	5,735	5,534	-3.5%	-48.3%
Rest of State	2009	2010	2011	2012	2013	2014	2015	2016	2017	2018	% change	
											2017-18	2009-18
<b>Index Crime</b>	<b>261,612</b>	<b>262,327</b>	<b>257,243</b>	<b>256,613</b>	<b>238,343</b>	<b>224,987</b>	<b>211,491</b>	<b>203,515</b>	<b>191,704</b>	<b>174,434</b>	<b>-9.0%</b>	<b>-33.3%</b>
<b>Violent Crime</b>	<b>28,473</b>	<b>27,347</b>	<b>26,255</b>	<b>26,311</b>	<b>24,097</b>	<b>22,923</b>	<b>25,070</b>	<b>25,000</b>	<b>24,243</b>	<b>22,391</b>	<b>-7.6%</b>	<b>-21.4%</b>
Murder	313	330	255	269	310	283	268	296	258	274	6.2%	-12.5%
Rape	1,733	1,730	1,681	1,669	1,504	1,469	3,907	3,873	4,004	3,894	-2.7%	N/A
Robbery	9,466	8,797	8,578	8,354	8,009	7,413	6,942	6,741	6,068	5,214	-14.1%	-44.9%
Agg. Assault	16,961	16,490	15,741	16,019	14,274	13,758	13,953	14,090	13,913	13,009	-6.5%	-23.3%
<b>Property Crime</b>	<b>233,139</b>	<b>234,980</b>	<b>230,988</b>	<b>230,302</b>	<b>214,246</b>	<b>202,064</b>	<b>186,421</b>	<b>178,515</b>	<b>167,461</b>	<b>152,043</b>	<b>-9.2%</b>	<b>-34.8%</b>
Burglary	43,897	46,769	46,930	45,446	39,571	34,749	29,970	27,692	23,738	20,162	-15.1%	-54.1%
Larceny	178,153	178,121	174,836	175,844	166,599	159,307	148,496	142,858	136,098	124,315	-8.7%	-30.2%
MV Theft	11,089	10,090	9,222	9,012	8,076	8,008	7,955	7,965	7,625	7,566	-0.8%	-31.8%

Note: The increase in violent crime and rape between 2014 and 2015 is attributable to New York State's implementation of the FBI's [expanded definition](#) of rape.

**Appendix 3**  
**New York State Index Crime Summary by County: 2018**  
**Rates per 100,000 Population**

County	Crime Rate			County	Crime Rate		
	Index	Violent	Property		Index	Violent	Property
Albany	2,745.0	364.1	2,380.9	Onondaga	2,178.5	300.4	1,878.1
Allegany	999.3	164.0	835.3	Ontario	1,349.9	120.3	1,229.6
Bronx	2,431.3	860.6	1,570.7	Orange	1,575.3	209.1	1,366.2
Broome	2,717.0	318.9	2,398.1	Orleans	1,491.4	160.2	1,331.3
Cattaraugus	1,475.1	165.6	1,309.5	Oswego	1,754.6	162.4	1,592.2
Cayuga	1,629.9	258.5	1,371.4	Otsego	1,225.5	161.9	1,063.5
Chautauqua	2,107.2	284.5	1,822.8	Putnam	515.3	55.4	459.9
Chemung	1,722.5	160.5	1,562.0	Queens	1,421.3	379.9	1,041.4
Chenango	1,516.5	184.5	1,332.0	Rensselaer	1,972.8	247.5	1,725.3
Clinton	1,461.4	219.4	1,242.0	Richmond	1,210.7	297.1	913.6
Columbia	1,505.0	172.5	1,332.5	Rockland	937.7	108.6	829.1
Cortland	1,660.0	124.2	1,535.8	St Lawrence	1,303.3	140.8	1,162.5
Delaware	1,355.8	174.4	1,181.4	Saratoga	1,148.6	102.2	1,046.4
Dutchess	1,255.7	184.7	1,071.0	Schenectady	3,018.7	468.1	2,550.6
Erie	2,519.2	388.2	2,131.0	Schoharie	1,043.8	88.1	955.7
Essex	824.4	146.3	678.1	Schuyler	340.5	85.1	255.4
Franklin	1,034.2	141.8	892.5	Seneca	1,357.2	139.3	1,217.9
Fulton	1,797.2	276.1	1,521.2	Steuben	1,105.2	169.0	936.2
Genesee	1,671.5	226.6	1,444.9	Suffolk	1,293.4	103.1	1,190.3
Greene	1,307.4	245.9	1,061.5	Sullivan	1,623.4	264.2	1,359.2
Hamilton	1,057.0	68.9	988.1	Tioga	834.5	90.8	743.6
Herkimer	1,058.1	118.5	939.6	Tompkins	1,835.9	150.1	1,685.8
Jefferson	1,792.7	227.3	1,565.4	Ulster	1,285.6	161.1	1,124.5
Kings	1,913.8	549.4	1,364.4	Warren	1,507.2	152.0	1,355.2
Lewis	796.7	123.2	673.5	Washington	707.3	121.2	586.1
Livingston	1,014.4	92.9	921.4	Wayne	1,657.9	193.1	1,464.8
Madison	1,356.5	193.4	1,163.1	Westchester	1,019.5	174.8	844.7
Monroe	2,298.8	309.3	1,989.6	Wyoming	842.8	159.5	683.4
Montgomery	1,485.8	163.9	1,321.8	Yates	1,002.9	69.6	933.3
Nassau	991.5	111.6	879.9				
New York	3,028.2	544.0	2,484.3	New York City	2,043.4	541.0	1,502.4
Niagara	2,061.9	291.8	1,770.1	Rest of State	1,583.6	203.3	1,380.4
Oneida	2,050.6	284.7	1,765.9	New York State	1,784.2	350.6	1,433.6

**Appendix 4**  
**Violent Crime by Firearm**  
**2014 - 2018**

	New York City					% Change	
	2014	2015	2016	2017	2018	2017-18	2014-18
<b>Violent Crime</b>	<b>49,444</b>	<b>50,088</b>	<b>49,124</b>	<b>46,433</b>	<b>46,113</b>	<b>-0.7%</b>	<b>-6.7%</b>
<b>Firearm Related</b>	<b>7,005</b>	<b>6,577</b>	<b>5,393</b>	<b>4,747</b>	<b>4,245</b>	<b>-10.6%</b>	<b>-39.4%</b>
<b>Percent Firearm Related</b>	<b>14.2%</b>	<b>13.1%</b>	<b>11.0%</b>	<b>10.2%</b>	<b>9.2%</b>		
<b>Murder</b>	<b>333</b>	<b>352</b>	<b>335</b>	<b>292</b>	<b>295</b>	<b>1.0%</b>	<b>-11.4%</b>
Firearm Related	188	235	203	153	161	5.2%	-14.4%
Percent Firearm Related	56.5%	66.8%	60.6%	52.4%	54.6%		
<b>Rape</b>	<b>1,070</b>	<b>2,244</b>	<b>2,372</b>	<b>2,375</b>	<b>2,814</b>	<b>18.5%</b>	<b>N/A</b>
Firearm Related	30	18	20	19	18	-5.3%	N/A
Percent Firearm Related	2.8%	0.8%	0.8%	0.8%	0.6%		
<b>Robbery</b>	<b>16,581</b>	<b>16,946</b>	<b>15,544</b>	<b>13,995</b>	<b>12,962</b>	<b>-7.4%</b>	<b>-21.8%</b>
Firearm Related	3,415	3,308	2,556	2,151	1,865	-13.3%	-45.4%
Percent Firearm Related	20.6%	19.5%	16.4%	15.4%	14.4%		
<b>Agg Assault</b>	<b>31,460</b>	<b>30,546</b>	<b>30,873</b>	<b>29,771</b>	<b>30,042</b>	<b>0.9%</b>	<b>-4.5%</b>
Firearm Related	3,372	3,016	2,614	2,424	2,201	-9.2%	-34.7%
Percent Firearm Related	10.7%	9.9%	8.5%	8.1%	7.3%		

	Rest of State					% Change	
	2014	2015	2016	2017	2018	2017-18	2014-18
<b>Violent Crime</b>	<b>22,923</b>	<b>25,070</b>	<b>25,000</b>	<b>24,243</b>	<b>22,391</b>	<b>-7.6%</b>	<b>-2.3%</b>
<b>Firearm Related</b>	<b>4,612</b>	<b>4,437</b>	<b>4,639</b>	<b>4,063</b>	<b>3,654</b>	<b>-10.1%</b>	<b>-20.8%</b>
<b>Percent Firearm Related</b>	<b>20.1%</b>	<b>17.7%</b>	<b>18.6%</b>	<b>16.8%</b>	<b>16.3%</b>		
<b>Murder</b>	<b>283</b>	<b>268</b>	<b>296</b>	<b>258</b>	<b>274</b>	<b>6.2%</b>	<b>-3.2%</b>
Firearm Related	161	151	166	142	169	19.0%	5.0%
Percent Firearm Related	56.9%	56.3%	56.1%	55.0%	61.7%		
<b>Rape</b>	<b>1,469</b>	<b>3,907</b>	<b>3,873</b>	<b>4,004</b>	<b>3,894</b>	<b>-2.7%</b>	<b>N/A</b>
Firearm Related	27	13	17	19	25	31.6%	N/A
Percent Firearm Related	1.8%	0.3%	0.4%	0.5%	0.6%		
<b>Robbery</b>	<b>7,413</b>	<b>6,942</b>	<b>6,741</b>	<b>6,068</b>	<b>5,214</b>	<b>-14.1%</b>	<b>-29.7%</b>
Firearm Related	2,283	2,066	2,115	1,679	1,458	-13.2%	-36.1%
Percent Firearm Related	30.8%	29.8%	31.4%	27.7%	28.0%		
<b>Agg Assault</b>	<b>13,758</b>	<b>13,953</b>	<b>14,090</b>	<b>13,913</b>	<b>13,009</b>	<b>-6.5%</b>	<b>-5.4%</b>
Firearm Related	2,141	2,207	2,341	2,223	2,002	-9.9%	-6.5%
Percent Firearm Related	15.6%	15.8%	16.6%	16.0%	15.4%		

*Note: Due to the expanded definition of rape, percent change comparison for rape statistics reported in 2014 vs. 2018 is not shown.*



**Appendix 5**  
**Homicides and Homicides by Firearm**  
**2009-2018**

Year	New York City		Rest of State		New York State	
	Homicides	Firearm Related	Homicides	Firearm Related	Homicides	Firearm Related
2009	471	302	313	181	784	483
2010	536	323	330	199	866	522
2011	515	315	255	133	770	448
2012	419	241	269	170	688	411
2013	335	194	310	172	645	366
2014	333	188	283	161	616	349
2015	352	235	268	151	620	386
2016	335	203	296	166	631	369
2017	292	153	258	142	550	295
2018	295	161	274	169	569	330
<b>2009 vs. 2018 % Change</b>	-37.4%	-46.7%	-12.5%	-6.6%	-27.4%	-31.7%

**Appendix 6**  
**New York State Index Crime Summary by County**  
**2017 vs. 2018**

County	Year	Total Violent	Murder	Rape	Robbery	Agg. Assault	Property	Burglary	Larceny	MV Theft	
Albany	2017	<b>8,786</b>	<b>1,163</b>	8	116	313	726	<b>7,623</b>	788	6,613	222
	2018	<b>8,361</b>	<b>1,109</b>	16	120	261	712	<b>7,252</b>	756	6,269	227
	% change	<b>-4.8%</b>	<b>-4.6%</b>	100.0%	3.4%	-16.6%	-1.9%	<b>-4.9%</b>	-4.1%	-5.2%	2.3%
Allegany	2017	<b>508</b>	<b>80</b>	2	34	3	41	<b>428</b>	80	334	14
	2018	<b>457</b>	<b>75</b>	1	29	4	41	<b>382</b>	86	283	13
	% change	<b>-10.0%</b>	<b>-6.3%</b>	-50.0%	-14.7%	33.3%	0.0%	<b>-10.7%</b>	7.5%	-15.3%	-7.1%
Bronx	2017	<b>35,507</b>	<b>12,534</b>	72	551	3,570	8,341	<b>22,973</b>	2,108	19,509	1,356
	2018	<b>35,355</b>	<b>12,514</b>	91	662	3,213	8,548	<b>22,841</b>	2,095	19,434	1,312
	% change	<b>-0.4%</b>	<b>-0.2%</b>	26.4%	20.1%	-10.0%	2.5%	<b>-0.6%</b>	-0.6%	-0.4%	-3.2%
Broome	2017	<b>5,582</b>	<b>696</b>	4	150	138	404	<b>4,886</b>	790	3,952	144
	2018	<b>5,137</b>	<b>603</b>	8	127	110	358	<b>4,534</b>	753	3,635	146
	% change	<b>-8.0%</b>	<b>-13.4%</b>	100.0%	-15.3%	-20.3%	-11.4%	<b>-7.2%</b>	-4.7%	-8.0%	1.4%
Cattaraugus	2017	<b>1,164</b>	<b>131</b>	2	48	12	69	<b>1,033</b>	190	810	33
	2018	<b>1,087</b>	<b>122</b>	2	36	8	76	<b>965</b>	150	770	45
	% change	<b>-6.6%</b>	<b>-6.9%</b>	0.0%	-25.0%	-33.3%	10.1%	<b>-6.6%</b>	-21.1%	-4.9%	36.4%
Cayuga	2017	<b>1,367</b>	<b>246</b>	1	81	23	141	<b>1,121</b>	189	907	25
	2018	<b>1,236</b>	<b>196</b>	0	46	30	120	<b>1,040</b>	135	861	44
	% change	<b>-9.6%</b>	<b>-20.3%</b>	-100.0%	-43.2%	30.4%	-14.9%	<b>-7.2%</b>	-28.6%	-5.1%	76.0%
Chautauqua	2017	<b>2,791</b>	<b>348</b>	4	66	57	221	<b>2,443</b>	513	1,848	82
	2018	<b>2,652</b>	<b>358</b>	2	95	53	208	<b>2,294</b>	475	1,742	77
	% change	<b>-5.0%</b>	<b>2.9%</b>	-50.0%	43.9%	-7.0%	-5.9%	<b>-6.1%</b>	-7.4%	-5.7%	-6.1%
Chemung	2017	<b>1,567</b>	<b>143</b>	4	28	32	79	<b>1,424</b>	185	1,205	34
	2018	<b>1,438</b>	<b>134</b>	3	19	25	87	<b>1,304</b>	198	1,073	33
	% change	<b>-8.2%</b>	<b>-6.3%</b>	-25.0%	-32.1%	-21.9%	10.1%	<b>-8.4%</b>	7.0%	-11.0%	-2.9%
Chenango	2017	<b>715</b>	<b>83</b>	3	46	3	31	<b>632</b>	124	497	11
	2018	<b>707</b>	<b>86</b>	1	52	3	30	<b>621</b>	108	498	15
	% change	<b>-1.1%</b>	<b>3.6%</b>	-66.7%	13.0%	0.0%	-3.2%	<b>-1.7%</b>	-12.9%	0.2%	36.4%
Clinton	2017	<b>1,214</b>	<b>135</b>	0	66	8	61	<b>1,079</b>	171	885	23
	2018	<b>1,159</b>	<b>174</b>	2	87	9	76	<b>985</b>	139	817	29
	% change	<b>-4.5%</b>	<b>28.9%</b>	NA	31.8%	12.5%	24.6%	<b>-8.7%</b>	-18.7%	-7.7%	26.1%
Columbia	2017	<b>970</b>	<b>134</b>	1	39	11	83	<b>836</b>	139	669	28
	2018	<b>890</b>	<b>102</b>	1	44	0	57	<b>788</b>	109	661	18
	% change	<b>-8.2%</b>	<b>-23.9%</b>	0.0%	12.8%	-100.0%	-31.3%	<b>-5.7%</b>	-21.6%	-1.2%	-35.7%
Cortland	2017	<b>994</b>	<b>49</b>	0	28	10	11	<b>945</b>	165	766	14
	2018	<b>775</b>	<b>58</b>	2	25	10	21	<b>717</b>	157	537	23
	% change	<b>-22.0%</b>	<b>18.4%</b>	NA	-10.7%	0.0%	90.9%	<b>-24.1%</b>	-4.8%	-29.9%	64.3%

**Appendix 6**  
**New York State Index Crime Summary by County**  
**2017 vs. 2018**

County	Year	Total	Violent	Murder	Rape	Robbery	Agg. Assault	Property	Burglary	Larceny	MV Theft
Delaware	2017	520	59	0	32	2	25	461	103	346	12
	2018	583	75	1	31	3	40	508	91	401	16
	% change	12.1%	27.1%	NA	-3.1%	50.0%	60.0%	10.2%	-11.7%	15.9%	33.3%
Dutchess	2017	4,091	570	5	106	110	349	3,521	413	3,027	81
	2018	3,638	535	6	113	103	313	3,103	350	2,618	135
	% change	-11.1%	-6.1%	20.0%	6.6%	-6.4%	-10.3%	-11.9%	-15.3%	-13.5%	66.7%
Erie	2017	23,371	3,463	46	251	1,111	2,055	19,908	3,755	15,013	1,140
	2018	22,901	3,529	58	304	1,120	2,047	19,372	3,491	14,713	1,168
	% change	-2.0%	1.9%	26.1%	21.1%	0.8%	-0.4%	-2.7%	-7.0%	-2.0%	2.5%
Essex	2017	420	63	1	34	2	26	357	91	252	14
	2018	293	52	2	29	0	21	241	50	185	6
	% change	-30.2%	-17.5%	100.0%	-14.7%	-100.0%	-19.2%	-32.5%	-45.1%	-26.6%	-57.1%
Franklin	2017	688	100	1	57	5	37	588	136	426	26
	2018	518	71	0	48	2	21	447	84	341	22
	% change	-24.7%	-29.0%	-100.0%	-15.8%	-60.0%	-43.2%	-24.0%	-38.2%	-20.0%	-15.4%
Fulton	2017	1,088	118	0	51	12	55	970	143	800	27
	2018	944	145	0	51	14	80	799	94	679	26
	% change	-13.2%	22.9%	NA	0.0%	16.7%	45.5%	-17.6%	-34.3%	-15.1%	-3.7%
Genesee	2017	1,143	168	0	42	20	106	975	159	784	32
	2018	944	128	3	32	15	78	816	116	655	45
	% change	-17.4%	-23.8%	NA	-23.8%	-25.0%	-26.4%	-16.3%	-27.0%	-16.5%	40.6%
Greene	2017	635	139	1	38	4	96	496	99	381	16
	2018	606	114	2	40	1	71	492	106	379	7
	% change	-4.6%	-18.0%	100.0%	5.3%	-75.0%	-26.0%	-0.8%	7.1%	-0.5%	-56.3%
Hamilton	2017	36	4	0	2	0	2	32	7	22	3
	2018	46	3	0	0	1	2	43	19	24	0
	% change	27.8%	-25.0%	NA	-100.0%	NA	0.0%	34.4%	171.4%	9.1%	-100.0%
Herkimer	2017	1,126	155	1	40	7	107	971	148	795	28
	2018	643	72	0	22	6	44	571	125	422	24
	% change	-42.9%	-53.5%	-100.0%	-45.0%	-14.3%	-58.9%	-41.2%	-15.5%	-46.9%	-14.3%
Jefferson	2017	2,259	239	4	86	22	127	2,020	292	1,681	47
	2018	2,003	254	0	106	21	127	1,749	242	1,465	42
	% change	-11.3%	6.3%	-100.0%	23.3%	-4.5%	0.0%	-13.4%	-17.1%	-12.8%	-10.6%
Kings	2017	49,766	14,593	111	709	4,497	9,276	35,173	3,659	29,589	1,925
	2018	50,106	14,384	98	802	4,157	9,327	35,722	3,585	30,417	1,720
	% change	0.7%	-1.4%	-11.7%	13.1%	-7.6%	0.5%	1.6%	-2.0%	2.8%	-10.6%

**Appendix 6**  
**New York State Index Crime Summary by County**  
**2017 vs. 2018**

County	Year	Total	Violent	Murder	Rape	Robbery	Agg. Assault	Property	Burglary	Larceny	MV Theft
Lewis	2017	260	35	0	22	0	13	225	77	142	6
	2018	207	32	0	17	1	14	175	50	117	8
	% change	-20.4%	-8.6%	NA	-22.7%	NA	7.7%	-22.2%	-35.1%	-17.6%	33.3%
Livingston	2017	809	56	0	24	6	26	753	77	648	28
	2018	633	58	0	23	5	30	575	61	493	21
	% change	-21.8%	3.6%	NA	-4.2%	-16.7%	15.4%	-23.6%	-20.8%	-23.9%	-25.0%
Madison	2017	984	104	1	46	14	43	880	153	703	24
	2018	940	134	1	64	5	64	806	108	665	33
	% change	-4.5%	28.8%	0.0%	39.1%	-64.3%	48.8%	-8.4%	-29.4%	-5.4%	37.5%
Monroe	2017	18,949	2,571	35	276	903	1,357	16,378	2,341	13,081	956
	2018	16,874	2,270	37	278	683	1,272	14,604	2,133	11,548	923
	% change	-11.0%	-11.7%	5.7%	0.7%	-24.4%	-6.3%	-10.8%	-8.9%	-11.7%	-3.5%
Montgomery	2017	939	78	1	32	14	31	861	121	717	23
	2018	716	79	2	29	9	39	637	112	500	25
	% change	-23.7%	1.3%	100.0%	-9.4%	-35.7%	25.8%	-26.0%	-7.4%	-30.3%	8.7%
Nassau	2017	14,015	1,650	17	41	599	993	12,365	1,109	10,603	653
	2018	13,363	1,504	15	27	511	951	11,859	1,014	10,178	667
	% change	-4.7%	-8.8%	-11.8%	-34.1%	-14.7%	-4.2%	-4.1%	-8.6%	-4.0%	2.1%
New York	2017	47,146	8,671	46	530	2,749	5,346	38,475	2,215	35,622	638
	2018	49,830	8,951	31	640	2,731	5,549	40,879	2,455	37,682	742
	% change	5.7%	3.2%	-32.6%	20.8%	-0.7%	3.8%	6.2%	10.8%	5.8%	16.3%
Niagara	2017	5,513	776	4	83	199	490	4,737	851	3,607	279
	2018	4,261	603	3	86	154	360	3,658	510	2,874	274
	% change	-22.7%	-22.3%	-25.0%	3.6%	-22.6%	-26.5%	-22.8%	-40.1%	-20.3%	-1.8%
Oneida	2017	4,780	695	4	204	109	378	4,085	667	3,289	129
	2018	4,645	645	7	194	105	339	4,000	609	3,231	160
	% change	-2.8%	-7.2%	75.0%	-4.9%	-3.7%	-10.3%	-2.1%	-8.7%	-1.8%	24.0%
Onondaga	2017	10,893	1,429	24	211	355	839	9,464	1,744	7,146	574
	2018	9,942	1,371	28	193	334	816	8,571	1,307	6,553	711
	% change	-8.7%	-4.1%	16.7%	-8.5%	-5.9%	-2.7%	-9.4%	-25.1%	-8.3%	23.9%
Ontario	2017	1,623	135	2	58	16	59	1,488	257	1,194	37
	2018	1,459	130	1	55	12	62	1,329	209	1,094	26
	% change	-10.1%	-3.7%	-50.0%	-5.2%	-25.0%	5.1%	-10.7%	-18.7%	-8.4%	-29.7%
Orange	2017	6,757	875	8	165	198	504	5,882	616	5,091	175
	2018	5,928	787	5	138	181	463	5,141	562	4,435	144
	% change	-12.3%	-10.1%	-37.5%	-16.4%	-8.6%	-8.1%	-12.6%	-8.8%	-12.9%	-17.7%

**Appendix 6**  
**New York State Index Crime Summary by County**  
**2017 vs. 2018**

County	Year	Total Violent	Murder	Rape	Robbery	Agg. Assault	Property	Burglary	Larceny	MV Theft	
Orleans	2017	764	87	1	19	10	57	677	88	569	20
	2018	596	64	0	18	8	38	532	104	409	19
	% change	-22.0%	-26.4%	-100.0%	-5.3%	-20.0%	-33.3%	-21.4%	18.2%	-28.1%	-5.0%
Oswego	2017	1,980	218	1	96	17	104	1,762	406	1,282	74
	2018	2,031	188	2	78	21	87	1,843	264	1,499	80
	% change	2.6%	-13.8%	100.0%	-18.8%	23.5%	-16.3%	4.6%	-35.0%	16.9%	8.1%
Otsego	2017	733	93	4	45	2	42	640	116	509	15
	2018	719	95	0	42	3	50	624	108	502	14
	% change	-1.9%	2.2%	-100.0%	-6.7%	50.0%	19.0%	-2.5%	-6.9%	-1.4%	-6.7%
Putnam	2017	628	54	1	15	9	29	574	94	462	18
	2018	502	54	0	15	5	34	448	50	384	14
	% change	-20.1%	0.0%	-100.0%	0.0%	-44.4%	17.2%	-22.0%	-46.8%	-16.9%	-22.2%
Queens	2017	32,860	9,184	50	495	2,851	5,788	23,676	2,721	19,373	1,582
	2018	33,135	8,856	65	582	2,534	5,675	24,279	2,360	20,344	1,575
	% change	0.8%	-3.6%	30.0%	17.6%	-11.1%	-2.0%	2.5%	-13.3%	5.0%	-0.4%
Rensselaer	2017	3,517	448	6	69	127	246	3,069	558	2,377	134
	2018	3,093	388	1	62	109	216	2,705	425	2,150	130
	% change	-12.1%	-13.4%	-83.3%	-10.1%	-14.2%	-12.2%	-11.9%	-23.8%	-9.5%	-3.0%
Richmond	2017	5,969	1,451	13	90	328	1,020	4,518	401	3,883	234
	2018	5,738	1,408	10	128	327	943	4,330	342	3,803	185
	% change	-3.9%	-3.0%	-23.1%	42.2%	-0.3%	-7.5%	-4.2%	-14.7%	-2.1%	-20.9%
Rockland	2017	3,404	397	1	68	101	227	3,007	265	2,648	94
	2018	3,048	353	1	66	87	199	2,695	166	2,461	68
	% change	-10.5%	-11.1%	0.0%	-2.9%	-13.9%	-12.3%	-10.4%	-37.4%	-7.1%	-27.7%
St Lawrence	2017	1,512	134	1	44	12	77	1,378	208	1,133	37
	2018	1,398	151	1	64	16	70	1,247	238	980	29
	% change	-7.5%	12.7%	0.0%	45.5%	33.3%	-9.1%	-9.5%	14.4%	-13.5%	-21.6%
Saratoga	2017	2,795	278	2	82	35	159	2,517	347	2,102	68
	2018	2,607	232	3	68	17	144	2,375	265	2,038	72
	% change	-6.7%	-16.5%	50.0%	-17.1%	-51.4%	-9.4%	-5.6%	-23.6%	-3.0%	5.9%
Schenectady	2017	4,599	672	2	78	164	428	3,927	526	3,180	221
	2018	4,611	715	1	74	155	485	3,896	498	3,125	273
	% change	0.3%	6.4%	-50.0%	-5.1%	-5.5%	13.3%	-0.8%	-5.3%	-1.7%	23.5%
Schoharie	2017	314	37	0	25	0	12	277	67	199	11
	2018	320	27	1	13	3	10	293	45	242	6
	% change	1.9%	-27.0%	NA	-48.0%	NA	-16.7%	5.8%	-32.8%	21.6%	-45.5%

**Appendix 6**  
**New York State Index Crime Summary by County**  
**2017 vs. 2018**

County	Year	Total Violent	Murder	Rape	Robbery	Agg. Assault	Property	Burglary	Larceny	MV Theft	
Schuyler	2017	70	15	0	11	0	4	55	13	40	2
	2018	60	15	0	5	0	10	45	5	36	4
	% change	-14.3%	0.0%	NA	-54.5%	NA	150.0%	-18.2%	-61.5%	-10.0%	100.0%
Seneca	2017	570	73	0	22	5	46	497	71	423	3
	2018	458	47	3	19	2	23	411	38	364	9
	% change	-19.6%	-35.6%	NA	-13.6%	-60.0%	-50.0%	-17.3%	-46.5%	-13.9%	200.0%
Steuben	2017	1,268	171	1	79	8	83	1,097	209	855	33
	2018	1,040	159	1	63	13	82	881	172	685	24
	% change	-18.0%	-7.0%	0.0%	-20.3%	62.5%	-1.2%	-19.7%	-17.7%	-19.9%	-27.3%
Suffolk	2017	21,462	1,749	22	161	537	1,029	19,713	1,679	16,928	1,106
	2018	18,945	1,510	21	207	423	859	17,435	1,214	15,258	963
	% change	-11.7%	-13.7%	-4.5%	28.6%	-21.2%	-16.5%	-11.6%	-27.7%	-9.9%	-12.9%
Sullivan	2017	1,282	221	2	98	13	108	1,061	263	763	35
	2018	1,198	195	1	65	20	109	1,003	221	745	37
	% change	-6.6%	-11.8%	-50.0%	-33.7%	53.8%	0.9%	-5.5%	-16.0%	-2.4%	5.7%
Tioga	2017	453	48	0	28	0	20	405	78	300	27
	2018	395	43	0	17	3	23	352	55	278	19
	% change	-12.8%	-10.4%	NA	-39.3%	NA	15.0%	-13.1%	-29.5%	-7.3%	-29.6%
Tompkins	2017	1,959	144	1	61	34	48	1,815	190	1,591	34
	2018	1,896	155	0	62	33	60	1,741	192	1,519	30
	% change	-3.2%	7.6%	-100.0%	1.6%	-2.9%	25.0%	-4.1%	1.1%	-4.5%	-11.8%
Ulster	2017	2,572	289	2	64	40	183	2,283	312	1,904	67
	2018	2,258	283	5	94	22	162	1,975	289	1,605	81
	% change	-12.2%	-2.1%	150.0%	46.9%	-45.0%	-11.5%	-13.5%	-7.4%	-15.7%	20.9%
Warren	2017	1,079	107	3	44	10	50	972	131	818	23
	2018	952	96	1	50	7	38	856	70	771	15
	% change	-11.8%	-10.3%	-66.7%	13.6%	-30.0%	-24.0%	-11.9%	-46.6%	-5.7%	-34.8%
Washington	2017	506	79	2	39	3	35	427	72	339	16
	2018	426	73	1	35	5	32	353	68	271	14
	% change	-15.8%	-7.6%	-50.0%	-10.3%	66.7%	-8.6%	-17.3%	-5.6%	-20.1%	-12.5%
Wayne	2017	1,493	188	3	80	18	87	1,305	242	1,020	43
	2018	1,468	171	5	73	12	81	1,297	251	1,005	41
	% change	-1.7%	-9.0%	66.7%	-8.8%	-33.3%	-6.9%	-0.6%	3.7%	-1.5%	-4.7%
Westchester	2017	11,582	1,954	19	136	600	1,199	9,628	1,010	8,031	587
	2018	9,849	1,689	15	127	449	1,098	8,160	822	6,880	458
	% change	-15.0%	-13.6%	-21.1%	-6.6%	-25.2%	-8.4%	-15.2%	-18.6%	-14.3%	-22.0%

**Appendix 6**  
**New York State Index Crime Summary by County**  
**2017 vs. 2018**

County	Year	Total	Violent	Murder	Rape	Robbery	Agg. Assault	Property	Burglary	Larceny	MV Theft
Wyoming	2017	<b>346</b>	<b>71</b>	0	25	5	41	<b>275</b>	58	203	14
	2018	<b>333</b>	<b>63</b>	1	13	2	47	<b>270</b>	41	221	8
	% change	<b>-3.8%</b>	<b>-11.3%</b>	NA	-48.0%	-60.0%	14.6%	<b>-1.8%</b>	-29.3%	8.9%	-42.9%
Yates	2017	<b>259</b>	<b>26</b>	0	12	0	14	<b>233</b>	42	188	3
	2018	<b>245</b>	<b>17</b>	1	4	0	12	<b>228</b>	52	171	5
	% change	<b>-5.4%</b>	<b>-34.6%</b>	NA	-66.7%	NA	-14.3%	<b>-2.1%</b>	23.8%	-9.0%	66.7%

Notes: NA indicates that the percentage change is not applicable because the count in 2017 was zero.

Index and violent crime totals for 2017 and 2018 include the number of rapes reported under the expanded definition.