

New York State Missing Children 2002 Annual Report



February 2003

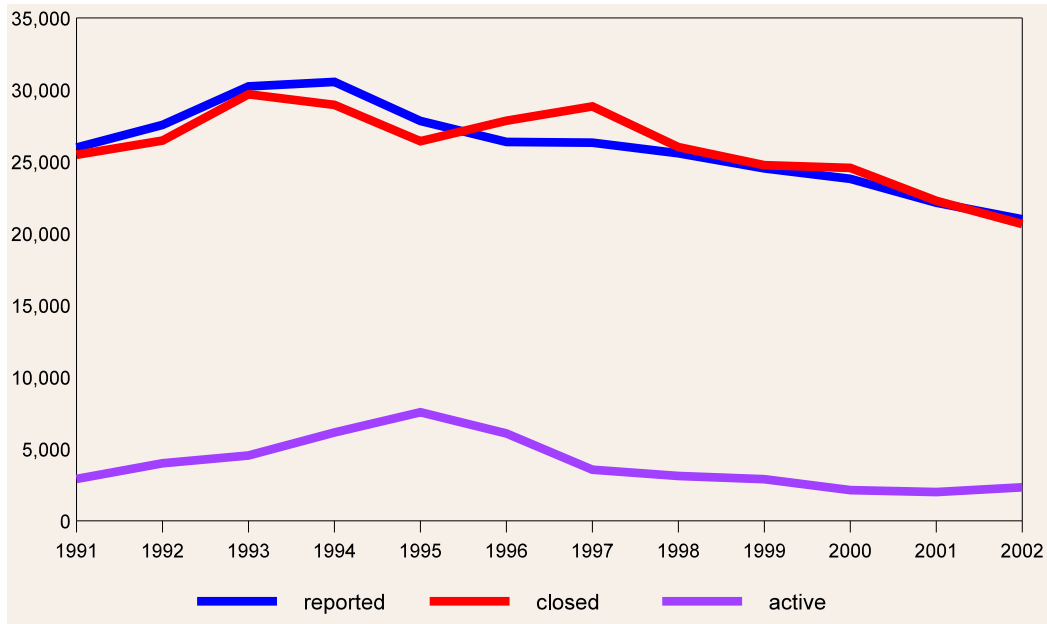
Summary

The following describes reporting activity on the New York State Missing Children Register during the year 2002.

- « The Register received 20,985 reports of children missing from New York State, a decrease of five percent from the previous year. This is the fewest number of annual cases involving children (under 18) ever reported missing in the State. A smaller number of cases were cancelled (20,654) than reported during the year, resulting in a 16.5 percent increase in the number of active cases at the end of 2002 compared with 2001.
- « Reports of missing children were concentrated in the State's largest urban areas. Suffolk County reported the highest volume of cases (2,152) followed by Westchester, Nassau, Monroe, Erie and Albany counties. (New York City counties do not report separately to the Register). Every county in the State reported at least one missing child during the year except for Hamilton, and 26 counties reported an increase in cases during 2002 compared with 2001.
- « Controlling for the under age 18 population by county, two counties in the Capital District (Albany and Schenectady) had the highest rates of case reporting in the State (16.0 and 14.7 per 1,000 children respectively). These counties were found to have unusually large numbers of repeat cases involving children who ran away from group homes or other facilities, and well established procedures for the timely reporting of these children as missing. The statewide rate of reporting was 4.6 missing children cases per 1,000 children in 2002.
- « The overwhelming majority of missing children cases were reported as suspected runaways (89.8%). Abduction cases accounted for approximately one percent of the total reports, and abductions committed by family members comprised the most frequent form of abduction. There were no reports statewide of a child abducted by a stranger in 2002. (Note: The lack of stranger abduction reports to the Register does not necessarily mean that none took place during the year. Typically, cases are not categorized as stranger abductions unless someone actually witnessed the child being abducted. Cases initially categorized as 'circumstances unknown' have sometimes later been found to involve stranger abductions but that information is rarely updated on the Register).
- « Ninety-two percent of the children reported missing were age 13 or older, 62 percent were female, and 54 percent were white. The single largest group of cases involved white females 13 years and older (32% of cases reported).
- « About 45 percent of the 20,654 cases closed during 2002 were resolved by the child voluntarily returning home. Law enforcement efforts were involved in the return of 28 percent of the cases, and 8 children who had been reported missing were found deceased. The median number of days between the reporting and cancellation of a case on the Register was 3 days.

New York State Missing Children in 2002

ANNUAL REPORTING VOLUME: 1991-2002

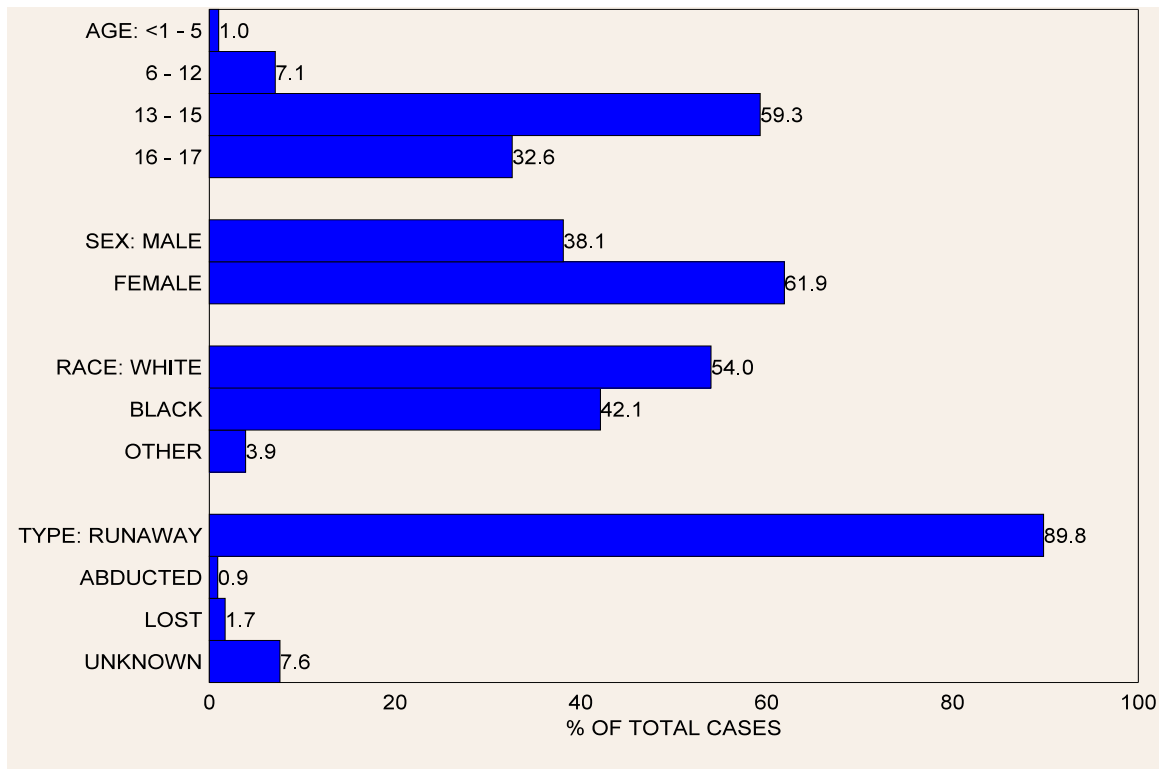


	1991	1992	1993	1994	1995	1996	1997	1998	1999	2000	2001	2002
NEW YORK STATE												
Cases Reported	25,975	27,553	30,232	30,549	27,830	26,368	26,316	25,578	24,531	23,801	22,139	20,985
Cases Closed	25,476	26,463	29,688	28,949	26,419	27,846	28,840	26,012	24,755	24,562	22,273	20,654
Active End-of-Year	2,913	4,003	4,547	6,147	7,558	6,080	3,556	3,122	2,898	2,137	2,003	2,334
NEW YORK CITY												
Cases Reported	8,424	8,983	10,095	9,166	7,060	6,244	7,067	6,847	6,628	6,640	5,699	4,534
Cases Closed	7,840	8,014	9,570	7,667	5,600	7,902	9,700	7,393	6,718	7,220	5,916	4,219
Active End-of-Year	2,117	3,086	3,611	5,110	6,570	4,879	2,246	1,700	1,610	1,030	813	1,128
SUBURBAN NEW YORK CITY												
Cases Reported	5,824	6,285	6,801	7,080	6,467	6,234	6,419	6,574	6,342	5,989	5,597	5,916
Cases Closed	5,898	6,203	6,810	7,038	6,515	6,041	6,362	6,400	6,480	6,013	5,617	5,860
Active End-of-Year	290	372	363	405	357	453	510	684	546	522	502	558
UPSTATE												
Cases Reported	11,720	12,275	13,327	14,296	14,288	13,885	12,821	12,147	11,554	11,163	10,829	10,527
Cases Closed	11,728	12,239	13,300	14,241	14,298	13,762	12,768	12,208	11,554	11,321	10,732	10,566
Active End-of-Year	506	542	569	624	614	737	790	729	729	571	668	629

Note: Statewide totals include cases from non-New York State agencies not included in the three geographical areas. New York City includes Bronx, Kings, New York, Queens and Richmond counties; Suburban New York City includes Nassau, Rockland, Suffolk, and Westchester counties.

New York State Missing Children in 2002

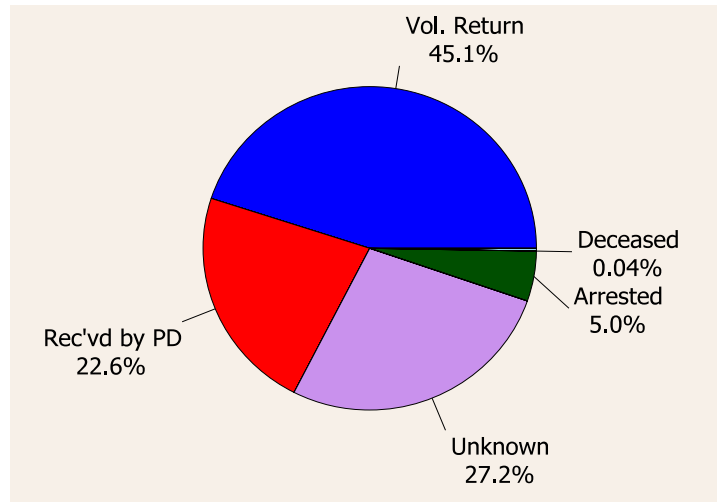
CHARACTERISTICS OF CASES REPORTED



	TOTAL	AGE WHEN REPORTED MISSING				GENDER		RACE	
		< 1 - 5	6 - 12	13 - 15	16 - 17	Male	Female	White	Non-White
TOTAL	20,985	209	1,484	12,448	6,844	8,002	12,983	11,333	9,652
Runaway	18,840	4	1,186	11,372	6,278	7,072	11,768	10,125	8,715
Familial Abduction	165	106	37	16	6	84	81	68	97
Acquaintance Abduction	37	9	6	15	7	15	22	24	13
Stranger Abduction	0	0	0	0	0	0	0	0	0
Lost	347	6	49	187	105	171	176	229	118
Unknown	1,596	84	206	858	448	660	936	887	709

CHARACTERISTICS OF CASES CLOSED

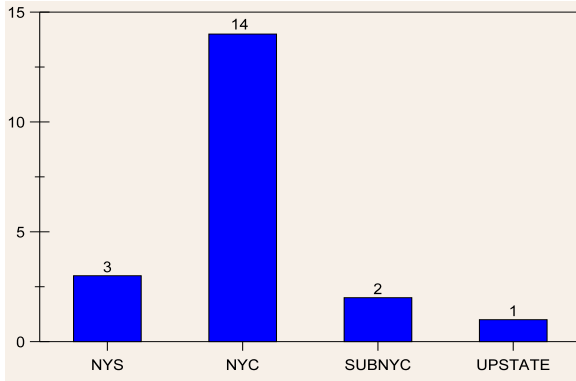
CIRCUMSTANCES OF RECOVERY



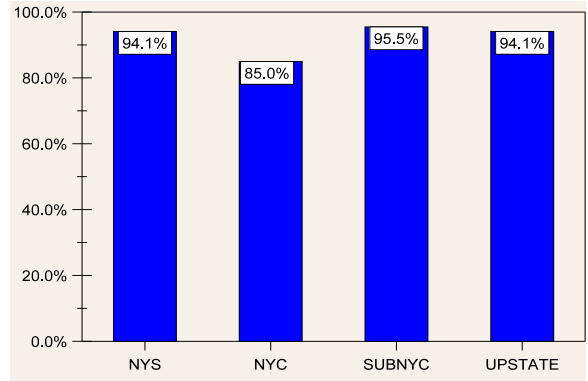
Circumstances of Recovery	TOTAL	AGE WHEN FOUND					GENDER		RACE	
		< 1 - 5	6 - 12	13 - 15	16 - 17	> 17	Male	Female	White	Non-White
TOTAL	20,654	196	1,410	11,928	6,921	199	7,900	12,754	10,285	10,369
Voluntary Return	9,319	51	626	5,491	3,102	49	3,505	5,814	5,101	4,218
Recovered by Law Enforcement	4,389	66	335	2,623	1,323	42	1,707	2,682	2,767	1,622
Recovered/Victimimized	289	9	22	162	96	0	111	178	184	105
Arrested	938	0	33	511	388	6	442	496	585	353
Arrested/Victimimized	93	0	2	50	41	0	48	45	61	32
Deceased	8	0	1	4	3	0	4	4	4	4
Other/Unknown	5,618	70	391	3,087	1,968	102	2,083	3,535	2,531	3,087

LENGTH OF TIME ON THE REGISTER

*MEDIAN DAYS TO CANCELLATION
(FOR CASES CLOSED DURING 2002)*



*CASE ENTRY TO CANCEL RATIO
(% of 2002 Case Entries Closed During 2002)*



**DAYS BETWEEN CASE ENTRY AND CANCELLATION
FOR CASES REPORTED DURING 2002**

No. of Days	No. of Cases Closed	Cumulative Percent Closed
< 1	4,882	23.3
1	3,298	39.0
2	1,298	45.2
3	882	49.4
4	697	52.7
5	525	55.2
6	497	57.6
7	517	60.0
8	417	62.0
9	325	63.6
10	256	64.8
11	263	66.0
12	242	67.2
13	246	68.4
14	248	69.5
15	215	70.6
16 - 29	1,674	78.5
30 - 60	1,739	87.0
61 - 90	836	91.0
91 - 120	321	92.5
121 or more	360	94.1
Still Active	1,247	5.9
TOTAL	20,985	100.0

New York State Missing Children in 2002

REPORTING VOLUME BY COUNTY

	Cases Reported							Cases Closed							Cases Active	
	Total	Rate ¹	Runaway	Acquaint. Abduction	Familial Abduction	Stranger Abduction	Lost	Unknown	Total	Voluntary Return	Returned by P.D.	Arrested	Victimized	Deceased	Unknown	End of Year Active Cases
Albany	1,092	16.0	980	1	7	0	25	79	1,103	212	111	62	10	0	708	66
Allegany	18	1.3	16	0	0	0	0	2	18	8	5	2	0	0	3	0
Broome	386	8.0	367	1	5	0	2	11	383	194	127	16	10	0	36	15
Cattaraugus	137	5.6	129	0	0	0	3	5	141	55	46	19	3	0	18	5
Cayuga	153	6.7	126	0	0	0	4	23	153	44	95	4	2	0	8	1
Chautauqua	329	8.8	314	0	1	0	2	12	334	118	155	17	9	0	35	6
Chemung	218	8.9	199	0	1	0	6	12	216	96	57	22	4	0	37	7
Chenango	45	3.0	44	0	0	0	0	1	45	15	25	1	1	0	3	0
Clinton	70	3.2	63	0	2	0	1	4	70	18	27	10	2	0	13	0
Columbia	74	4.5	66	0	0	0	5	3	73	26	34	7	1	0	5	5
Cortland	45	3.5	33	0	0	0	6	6	45	22	16	3	0	0	4	0
Delaware	113	9.1	108	0	0	0	2	3	114	56	34	16	1	0	7	4
Dutchess	296	4.4	249	2	11	0	12	22	298	137	87	17	6	0	51	17
Erie	1,105	4.7	1,009	0	3	0	4	89	1,137	152	68	29	16	0	872	134
Essex	6	0.6	6	0	0	0	0	0	6	3	1	2	0	0	0	0
Franklin	45	3.5	43	0	0	0	1	1	45	8	25	8	2	0	2	0
Fulton	39	2.7	31	1	0	0	3	4	37	13	17	6	1	0	0	2
Genesee	86	5.0	80	0	2	0	0	4	91	49	31	8	1	0	2	0
Greene	30	2.6	26	0	0	0	1	3	30	5	11	8	3	1	2	0
Hamilton	0	0.0	0	0	0	0	0	0	0	0	0	0	0	0	0	0
Herkimer	28	1.6	21	1	0	0	3	3	29	15	11	1	2	0	0	0
Jefferson	92	2.8	86	0	1	0	1	4	91	28	46	13	4	0	0	3
Lewis	5	0.6	5	0	0	0	0	0	6	4	1	1	0	0	0	0
Livingston	38	2.2	33	0	0	0	1	4	38	11	16	4	0	0	7	2
Madison	63	3.3	56	0	0	0	1	6	63	22	18	10	2	0	11	0
Monroe	1,187	6.2	1,148	1	4	0	7	27	1,151	371	376	111	8	0	285	120
Montgomery	41	2.9	35	0	0	0	4	2	40	18	13	5	1	0	3	2
Nassau	1,204	4.0	1,051	5	19	0	34	95	1,212	591	278	45	49	1	248	83
New York City ²	4,534	2.5	4,487	0	45	0	2	0	4,219	2,394	585	67	0	1	1,172	1,128
Niagara	410	7.1	391	0	2	0	4	13	399	214	95	23	3	0	64	38
Oneida	520	8.9	462	1	4	0	25	28	517	296	115	55	15	0	36	15
Onondaga	929	7.7	272	0	1	0	1	655	933	417	420	40	29	0	27	51

New York State Missing Children in 2002

REPORTING VOLUME BY COUNTY

	Cases Reported									Cases Closed						Cases Active
	Total	Rate ¹	Runaway	Acquaint. Abduction	Familial Abduction	Stranger Abduction	Lost	Unknown	Total	Voluntary Return	Returned by P.D.	Arrested	Victimized	Deceased	Unknown	End of Year Active Cases
Ontario	77	2.9	64	0	2	0	3	8	77	29	34	8	1	0	5	2
Orange	492	5.0	440	5	3	0	17	27	504	215	194	19	12	0	64	38
Orleans	36	2.9	33	0	0	0	0	3	34	19	8	4	0	0	3	3
Oswego	154	4.1	143	1	1	0	4	5	153	73	48	19	3	0	10	2
Otsego	21	1.4	15	2	0	0	1	3	20	4	7	4	0	0	5	1
Putnam	93	3.7	84	0	0	0	7	2	90	50	27	6	1	0	6	9
Rensselaer	346	8.8	306	1	1	0	12	26	346	153	53	18	2	0	120	11
Rockland	525	6.9	473	0	1	0	24	27	532	281	65	19	6	0	161	47
St. Lawrence	74	2.5	61	0	0	0	5	8	74	31	24	9	5	0	5	0
Saratoga	152	2.7	134	0	0	0	7	11	147	45	55	27	7	0	13	10
Schenectady	522	14.7	468	3	14	0	8	29	552	189	88	19	3	0	253	35
Schoharie	13	1.5	10	1	0	0	0	2	13	6	2	3	0	0	2	0
Schuyler	12	2.2	10	0	0	0	1	1	12	4	7	0	0	0	1	0
Seneca	25	2.8	21	0	0	0	0	4	25	13	6	4	2	0	0	0
Steuben	58	2.1	46	0	1	0	6	5	58	32	21	3	1	0	1	0
Suffolk	2,152	6.1	1,927	3	13	0	7	202	2,137	1,427	280	109	5	2	314	91
Sullivan	71	3.8	64	0	1	0	3	3	66	29	23	5	7	0	2	7
Tioga	30	1.9	25	0	0	0	1	4	31	15	7	0	2	0	7	1
Tompkins	149	7.0	133	0	0	0	7	9	150	39	64	13	0	1	33	3
Ulster	355	8.6	315	2	5	0	15	18	359	118	158	36	6	1	40	12
Warren	87	5.4	78	0	0	0	3	6	88	52	27	3	1	0	5	0
Washington	44	2.7	44	0	0	0	0	0	45	17	21	5	0	0	2	0
Wayne	97	3.5	88	1	0	0	4	4	97	45	26	12	5	0	9	2
Westchester	2,035	9.8	1,909	5	7	0	31	83	1,979	812	187	54	31	0	895	337
Wyoming	12	1.0	9	0	0	0	2	1	12	5	5	0	0	1	1	0
Yates	7	1.0	2	0	2	0	2	1	7	4	1	0	2	0	0	0
Non-NYS	8	--	2	0	6	0	0	0	9	0	5	0	2	0	2	19
NYS Total	20,985	4.6	18,840	37	165	0	347	1,596	20,654	9,319	4,389	1,031	289	8	5,618	2,334

¹ Rate per 1,000 children

² Includes the counties of Bronx, Kings, Queens, New York and Richmond